



# ERGOFIT<sup>+</sup>190

## INFLATABLE LIFEJACKET

It has long been known that the addition of a spray hood inside a lifejacket can significantly enhance the wearer's safety. It increases visibility and protects the airway by reducing the risk of secondary drowning which can result from water inhalation.

Enter the ErgoFit+ and its halo hood system. This industry first spray hood system works with the shape of the inflated bladder to significantly reduce the risk of water inhalation as well as heat loss. This is achieved through improved bladder and spray hood compatibility combined with a new double-halo hood construction. As a result, the spray hood is fully self-supporting once deployed and forms a spacious cavity above the wearer's face. The hood also includes an internal panel which further protects the wearer against spray whilst doubling up as an anti-glare panel, shielding the wearers' eyes from the lifejacket light.

### FEATURES

- **INDUSTRY FIRST** - Halo hood system for elevated airway protection
- **INDUSTRY FIRST** - Tailored window pocket, designed for full Exposure OLAS integration
- **INDUSTRY FIRST** - Slimline quick lock buckle system to provide easy donning
- Market leading bladder buoyancy distribution to maximise in-water support and airway protection
- Sculpted bladder profile for improved in-water mobility to aid self rescue
- A built-in inflatable chin support to help protect your airway
- Fusion 3D shape providing the ultimate in comfort
- Soft loop D-ring for attaching safety harness
- Three-layer cover construction for durability
- Easy to adjust side waist adjusters
- AIS and PLB compatible
- Lifejacket light fitted as standard



HALO HOOD SYSTEM



QUICK LOCK BUCKLE



QUICK BURST ZIP



3D SHAPE FOR UNRIVALLED FIT



EXCEPTIONAL TURNING SPEEDS



AIS COMPATIBLE



FREEDOM OF MOVEMENT



UNIQUE CHIN SUPPORT



PROVIDES 190N OF BUOYANCY



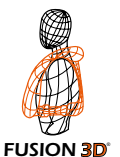
INDICATOR WINDOW



BS EN ISO 12402-3



RIVERSEAL RIVERSEAL



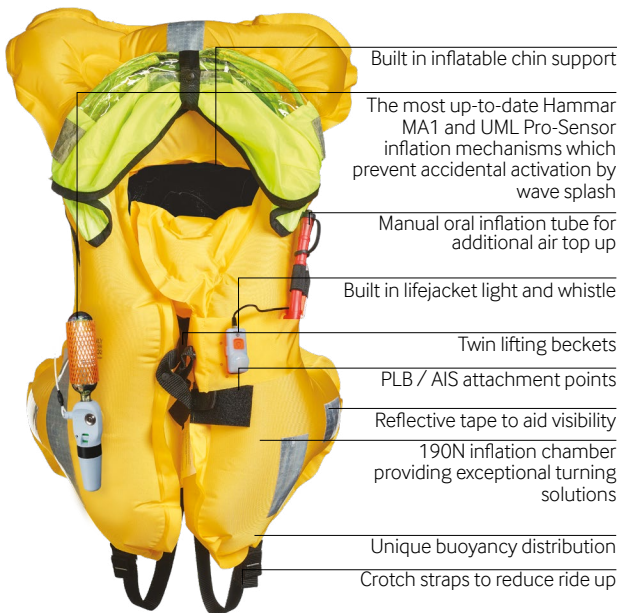
FUSION 3D

The renowned ErgoFit bladder is, as always, a step above the rest. With its tailored shape, the bladder distributes buoyancy uniquely around the wearer to maximise in-water support and airway protection. Even when wearing heavy clothing, the ErgoFit is designed to rotate the wearer in less than 3 seconds whilst increasing the distance between the waterline and airway (mouth freeboard). The sculpted shaping around the shoulders provides improved in-water mobility and with it the ability for the wearer to self-help recovery back to safety.

In addition, the ErgoFit+ incorporates a new-to-market buckle system. With its slimline design, the quick lock buckle makes the lifejacket easy to don and accommodates the use of a single loop harness attachment point for ease of tethering.

A technological collaboration between Crewsaver innovations and that of its new partner, Exposure, is evident in the ErgoFit+. The Exposure OLAS Tag, a portable crew tracking and overboard location alert system, can be easily integrated into this lifejacket - taking man overboard protection to the next level.

\*For maximum protection in severe weather conditions / when wearing heavy waterproofs / when help is far away, Crewsaver recommend opting for a 275N rated lifejacket, such as the ErgoFit+ 290N



**Ordering Information**

PART NUMBER	PRODUCT NAME	SIZE
9155NBGAP	ErgoFit+ 190N Automatic with Harness, Light & Hood	Adult
9155NBGHP	ErgoFit+ 190N Hammar with Harness, Light & Hood	Adult

**Accessories**

PART NUMBER	PRODUCT NAME
EXPOLASTAG	Exposure OLAS Crew Tag and Strap
SUPFITS20	McMurdo S20 Supply and Fit
1310-SK	ErgoFit Safety Knife
10065	Lifejacket Bag

**Spares**

PART NUMBER	PRODUCT NAME
11306	ErgoFit 190N Hammar 38 g Rearming Kit
11331	38 g Elite Pro-Sensor Rearming Kit
11341	Elite Pro-Sensor Capsule
10034	38 g Cylinder For Automatic Variant Only
10220	Surface Lifejacket Light

TECHNICAL DATA	
<b>Newtons</b>	190N (Approved to ISO 150N)
<b>Type</b>	Lifejacket
<b>Flotation</b>	Inflatable
<b>Chambers</b>	Single
<b>Harness</b>	Deck
<b>Cover</b>	Hard Wearing

Approvals  
ISO approved 12402-3

