



Crewsaver®

USER MANUAL

LEVEL 50 PFD/50N BUOYANCY AID

PRO 50^{SZ}

PRO 50^{CZ}

SPORT 50

RESPONSE 50



READ THIS MANUAL BEFORE USE



EN ISO 12402-5:2006+A1:2010
REGULATION (EU) 2016/425



WHAT IS A BUOYANCY AID?

This product is a buoyancy aid, not a lifejacket.

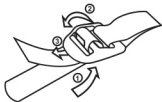
A lifejacket will give a reasonable assurance of safety from drowning to a person who, for whatever reason, is no longer capable of helping themselves fully.

A buoyancy aid will provide support to a conscious person who is able to swim and to help themselves in situations where help is close at hand.

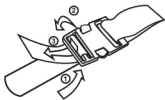
Your buoyancy aid is made from materials which have been tested for strength and durability. It is fitted with closed cell (non-absorbent) foam and conforms to the minimum requirements for buoyancy and standard of manufacture as required by ISO 12402-5 approval.

Full performance may not be achieved using waterproof clothing or in other circumstances. Certain conditions will alter this performance, such as waves or the wearing of garments which provide additional buoyancy. The buoyancy provided by the product can be affected if heavy objects are carried in the pockets.

The buoyancy aid will only function correctly with all the foam layers inserted. Do not use the buoyancy aid as a cushion. Using it as a cushion or pillow can damage the foam filling.



**ADJUSTER
THREADING**



**BUCKLE
THREADING**

Always check that you have donned your buoyancy aid correctly and that the fastenings are secured. It is recommended that your buoyancy aid is worn outside other garments to enable adjustments to be made to the fastenings in an emergency. Bright colours are recommended to aid visibility. Not to be used with a safety harness.

GET TO KNOW YOUR SAFETY EQUIPMENT

Train yourself in the use of the device. Owning a buoyancy aid is no guarantee of safety unless you know how to use it.

1. Practice and training are required with this device before use. In an emergency there is no time to learn how equipment works. You should practice putting it on and making the final adjustments for a safe fit.
2. It is important to adjust the straps to achieve a close fit. This reduces the possibility of the buoyancy aid riding-up in the water.
3. Children should be encouraged to learn how to put their buoyancy aids on for themselves. Teach the child to float in this buoyancy aid.

4. Train yourself in the use of this device. You should also practice in the water so that you know how the equipment functions and in particular get used to the floatation position it gives you.

RECOMMENDATIONS FOR SAFE SAILING

1. Always wear your buoyancy aid!
2. Do not sail alone except in the most sheltered waters.
3. Always tell somebody where you are going, and how long you will be.
4. When treated properly your buoyancy aid can give you years of use.
5. Wear sufficient clothes for the prevailing conditions.
6. In the event of a capsize stay with your boat unless it is taking you into danger.
7. Wear protection on your feet.
8. Always ask about local conditions, tides, currents and weather changes can all be dangerous. Be realistic about the wind, waves and your ability. Be prepared to make for shelter in good time before conditions deteriorate beyond your capability.
9. Remember to provide buoyancy for your boat as well.

FITTING INSTRUCTIONS

RESPONSE 50

1. Don like a normal jacket
2. Fasten the zipper to the top.
3. Fasten the buckle.
4. Adjust waist belt to fit.



1. SLIP ON



2. ZIP UP



3. BUCKLE UP



4. ADJUST

SPORT 50

1. Don like a normal jacket
2. Fasten the zipper to the top.
3. Adjust the webbings on the sides
4. Adjust the webbings on the shoulders



1. SLIP ON



2. ZIP UP



3. ADJUST



4. ADJUST

PRO 50 sz

1. Don over head
2. Fasten the side zipper.
3. Fasten the buckle.
4. Adjust waist belt to fit.



1. SLIP ON



2. ZIP UP



3. BUCKLE UP



4. ADJUST

PRO 50 cz

1. Don like a normal jacket
2. Fasten the zipper to the top.
3. Adjust the webbings on the sides



1. SLIP ON



2. ZIP UP



3. ADJUST

CARE AND MAINTENANCE





When treated properly your buoyancy aid can give you several years of hard use. Check your buoyancy aid every time you put it on. Examine the product carefully to see that the zipper and buckles are in full working condition. Pay particular attention to the straps, webbing and stitching for signs of abrasion or damage. A buoyancy aid showing signs of damage or wear should not be used.

Do not store your buoyancy aid in a damp place, or near petrol, oil or other chemicals. Periodically rinse the buoyancy aid with fresh water, particularly if it has been in contact with salt water. After rinsing, allow the buoyancy aid to dry naturally before stowing in a dry place. Oil or other similar marks should be removed by washing with warm water. Never clean your buoyancy aid in a washing machine or dry it in a tumble dryer.

All closed cell foams will slowly lose a proportion of their buoyancy as the foam ages. This means that after a number of years, especially if it has been carelessly used or stored, the buoyancy aid may no longer provide the approved amount of buoyancy required at the time of manufacture. When three years old it should be tested annually, if the buoyancy falls below the following minimum buoyancy it should be replaced.

If in doubt contact Crewsaver or return the PFD to Crewsaver for professional inspection.



MODEL: 1256, 1257, 1258, 1259					
	J	S/M	M/L	XL	XXL
	66- 86	86- 99	99- 111	111- 124	124- 136
	30- 40	>40	>70	>70	>70
	35N	50N	50N	50N	50N

**SERIAL
NUMBER:**

**BATCH
NUMBER:**

GUARANTEE

Crewsaver offers a 12 month guarantee from the date of consumer purchase. The guarantee is only valid to the original retail consumer purchaser against defects in material or workmanship and a proof of purchase will be required. During the first 12 months of use, if a product is found to be defective due to a manufacturing failure Crewsaver will repair or replace any defective part at our discretion. Items must be clean and dry before being sent back for warranty or repair work. Wet or dirty products will not be repaired and will be returned to sender. This guarantee does not cover normal wear and tear or damage resulting from abuse, alteration or unauthorised repair. This guarantee does not affect your statutory rights.

For D of C visit www.crewsaver.com

**APPROVAL BY:
SGS FIMKO OY
TAKOMOTIE 8
00380 HELSINKI**

 **survitec**

www.crewsaver.com

ART0337i6